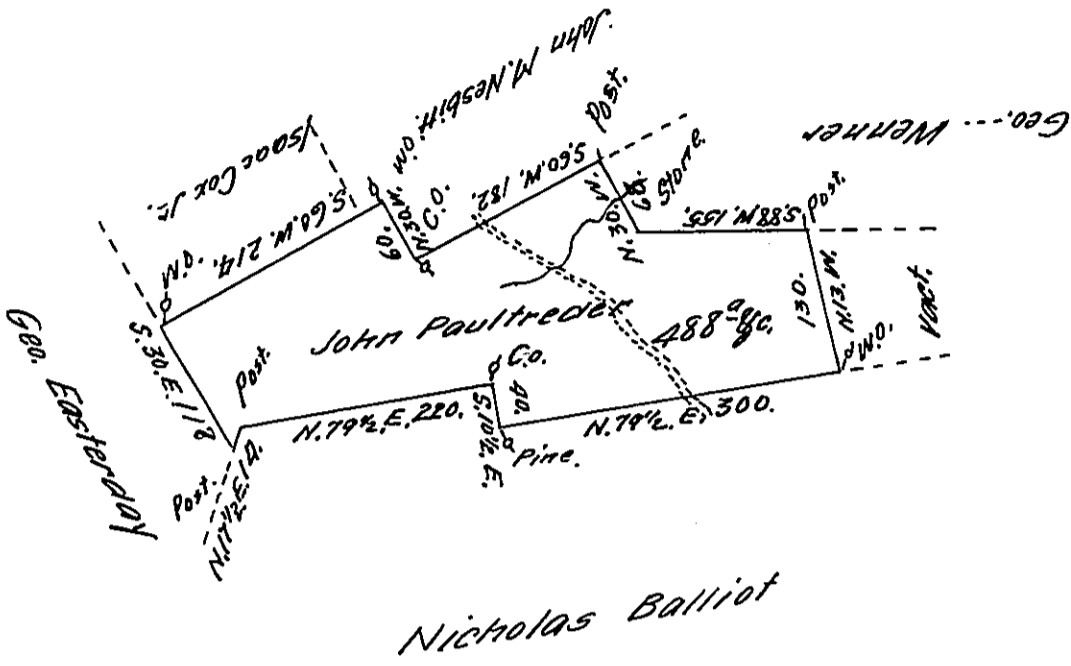


Butler
LUZETTE.



Return shows surveyed May 15 1794

A draft of a tract of land called Birken Situate on the Road from Berwick to Philadelphia in Northumberland County Containing four Hundred & Eighty Eight Acres & allow^e surveyed for John Paultreder. Alias Balliot the 13th day of 1794 by virtue of a warrant dated 20th day of Jan^y 1794.

by W^m Gray D.S.

Daniel Brodhead Esq^r - Surv^r - Gen^l }

Now Nescopeck Township Luzerne County.

IN TESTIMONY that the above is a copy of the original remaining on file in the Department of Internal Affairs of Pennsylvania, made conformably to an Act of Assembly approved the 16th day of February, 1833, I have hereunto set my Hand and caused the Seal of said Department to be affixed at Harrisburg, this eleventh day of October 1911.

Henry Howell
Secretary of Internal Affairs.